

SECTION X-X

PAPNUMBER	DESCRIPTION	"L"
J-CP-6-32F-FL	6-9/16" x 1-1/4" x 2-8 COMPOSITE PRIMED	32.000
J-CP-6-36F-FL	6-9/16" x 1-1/4" x 3-0 COMPOSITE PRIMED	36.000
J-CP-6-120F-FL	6-9/16" x 1-1/4" x 10-0 COMPOSITE PRIMED	120.000
J-CP-6-144F-FL	6-9/16" x 1-1/4" x 12-0 COMPOSITE PRIMED	144.000
J-CW-6-32F-FL	6-9/16" x 1-1/4" x 2-8 COMPOSITE WOODGRAIN	32.000
J-CW-6-36F-FL	6-9/16" x 1-1/4" x 3-0 COMPOSITE WOODGRAIN	36.000
J-CW-6-120F-FL	6-9/16" x 1-1/4" x 10-0 COMPOSITE WOODGRAIN	120.000
J-CW-6-144F-FL	6-9/16" x 1-1/4" x 12-0 COMPOSITE WOODGRAIN	144.000

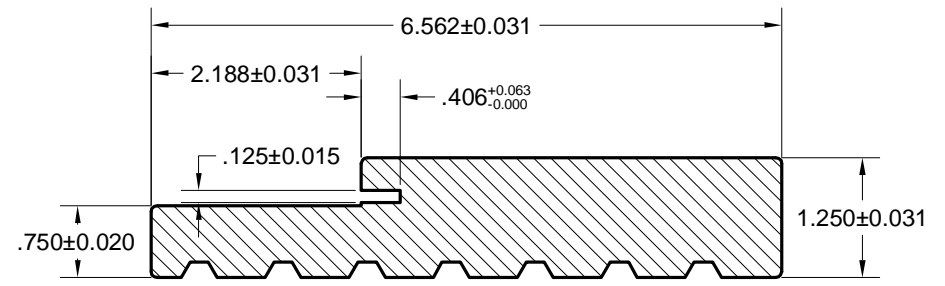
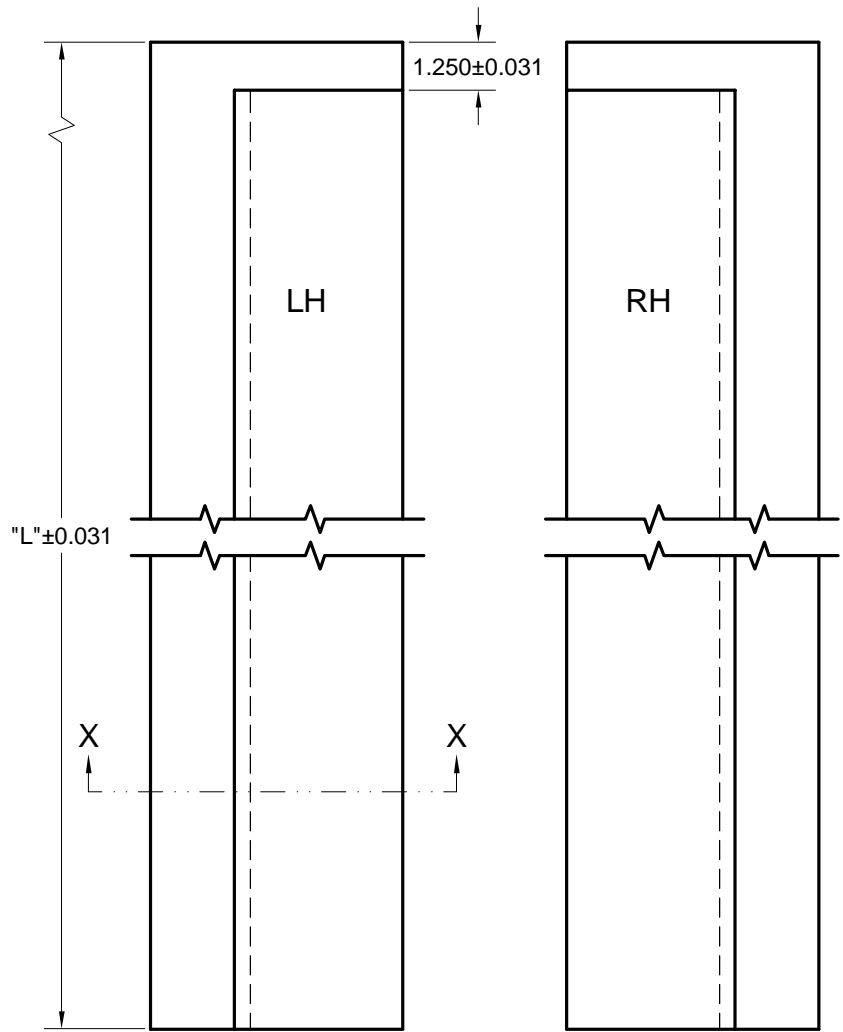


USA WORLDWIDE DOOR COMPONENTS
(PINGHU) CO., LTD.

DESCRIPTION:		HEAD LINEAL 6-9/16	
MATERIAL:	COMPOSITE	REVISION:	

UNSPECIFIED TOLERANCES: FRACTION ± 1/64 .X ± .025 .XX ± .015 .XXX ± .005 ANGULAR ± 0.5°	DRAWN BY:	DATE:	DRAWING NO.:	
	Tom	7/31/15	FL-C696-OX	
	APPR BY:	DATE:	SCALE:	Unit:
			NTS	INCH
				SHEET:
				1 OF 1

REV	ECN	DESCRIPTION	BY	APP	DATE



SECTION X-X

PAPTNUMBER	DESCRIPTION	"L"
J-CP-6-83F-FL	6-9/16" x 1-1/4" x 6-8' COMPOSITE PRIMED LH/RH	83.000
J-CP-6-99F-FL	6-9/16" x 1-1/4" x 8-0 COMPOSITE PRIMED LH/RH	99.000
J-CW-6-83F-FL	6-9/16" x 1-1/4" x 6-8 COMPOSITE WOODGRAIN LH/RH	83.000
J-CW-6-99F-FL	6-9/16" x 1-1/4" x 8-0 COMPOSITE WOODGRAIN LH/RH	99.000



USA WORLDWIDE DOOR COMPONENTS (PINGHU) CO., LTD.

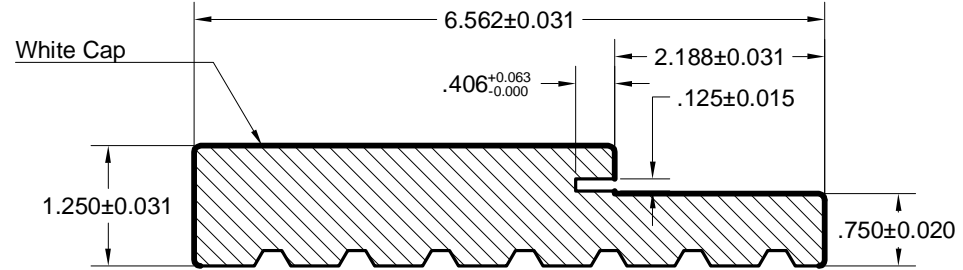
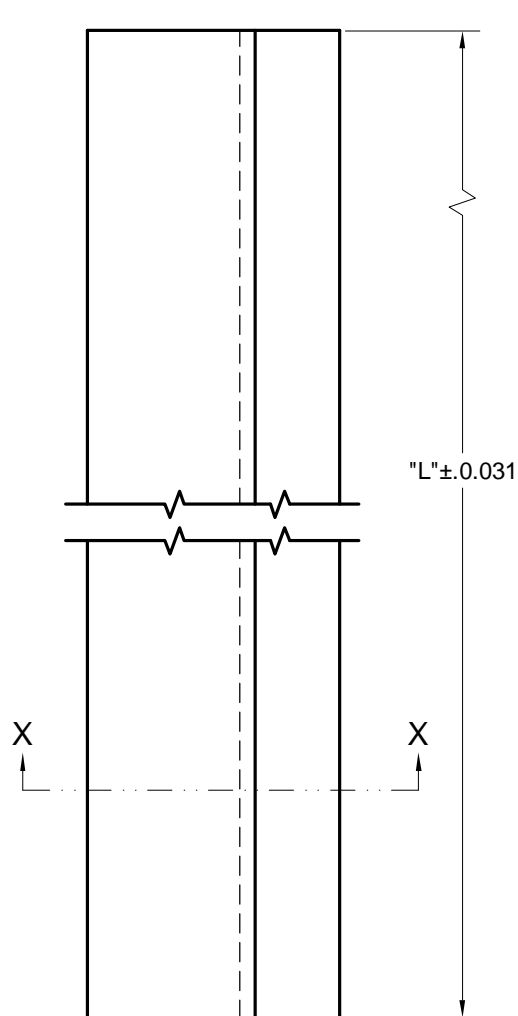
DESCRIPTION: JAMB 6-9/16 X 1-1/4	
MATERIAL: COMPOSITE	REVISION:

UNSPECIFIED TOLERANCES:

FRACTION	± 1/64
.X	± .025
.XX	± .015
.XXX	± .005
ANGULAR	± 0.5°

DRAWN BY: Tom	DATE: 7/31/15	DRAWING NO.: FL-C696F-TD		
APPR BY:	DATE:	SCALE: NTS	Unit: INCH	SHEET: 1 OF 1

REV	ECN	DESCRIPTION	BY	APP	DATE



SECTION X-X

PAPTNUMBER	DESCRIPTION	"L"
J-P-6-32F-FL	6-9/16" x 1-1/4" x 2-8 COMPOSITE White Cap	32.000
J-P-6-36F-FL	6-9/16" x 1-1/4" x 3-0 COMPOSITE White Cap	36.000
J-P-6-120F-FL	6-9/16" x 1-1/4" x 10-0 COMPOSITE White Cap	120.000
J-P-6-144F-FL	6-9/16" x 1-1/4" x 12-0 COMPOSITE White Cap	144.000

 USA WORLDWIDE DOOR COMPONENTS (PINGHU) CO., LTD.

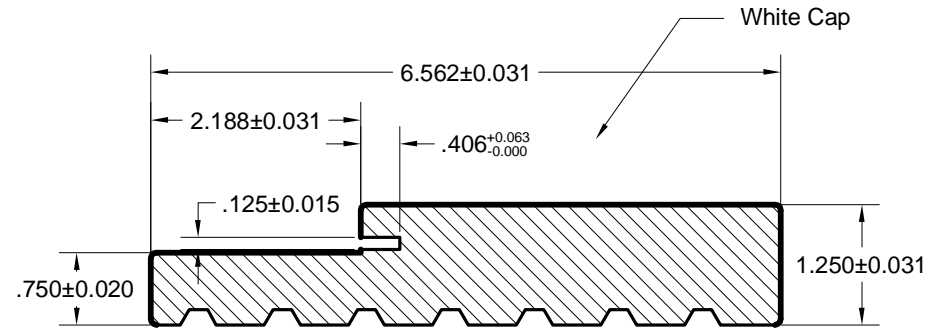
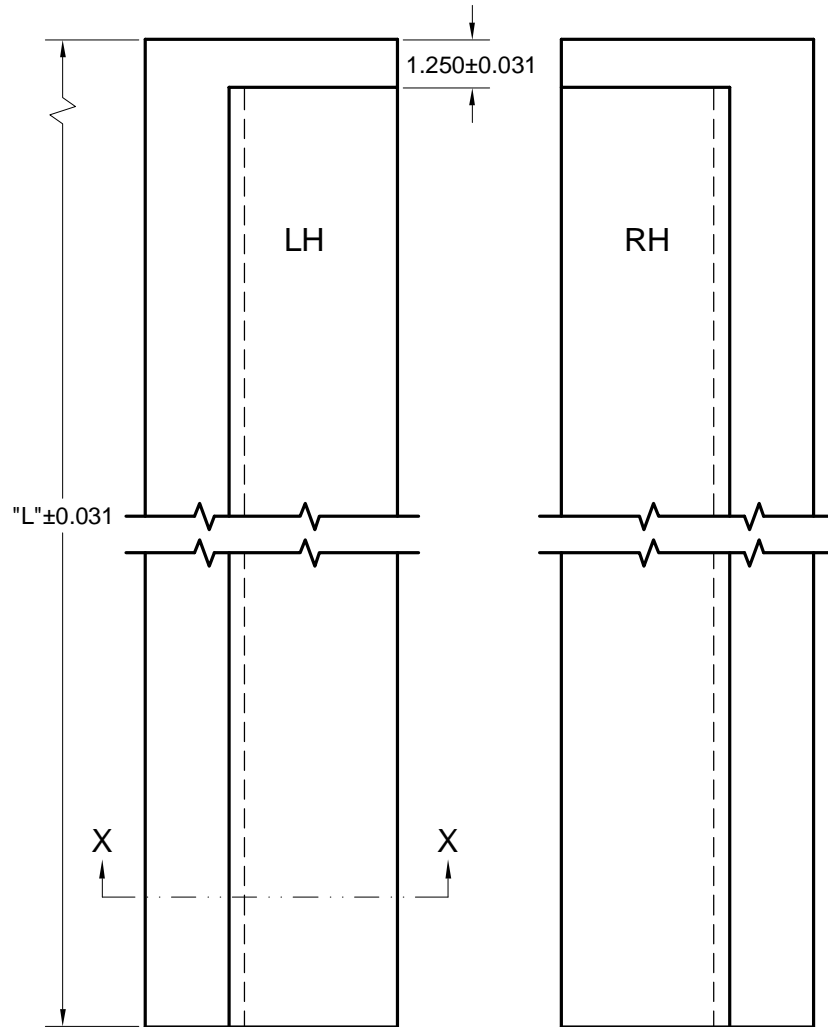
DESCRIPTION: HEAD LINEAL 6-9/16

MATERIAL: COMPOSITE

REVISION:

UNSPECIFIED TOLERANCES: FRACTION ± 1/64 .X ± .025 .XX ± .015 .XXX ± .005 ANGULAR ± 0.5°	DRAWN BY: Tom	DATE: 7/31/15	DRAWING NO.: FL-P696-OX		
	APPR BY:	DATE:	SCALE: NTS	Unit: INCH	SHEET: 1 OF 1

REV	ECN	DESCRIPTION	BY	APP	DATE



SECTION X-X

PAPNUMBER	DESCRIPTION	"L"
J-P-6-83F-LH/RH-FL	6-9/16" x 1-1/4" x 6-8' COMPOSITE White Cap LH/RH	83.000
J-P-6-99F-LH/RH-FL	6-9/16" x 1-1/4" x 8-0 COMPOSITE White Cap LH/RH	99.000



USA WORLDWIDE DOOR COMPONENTS (PINGHU) CO., LTD.

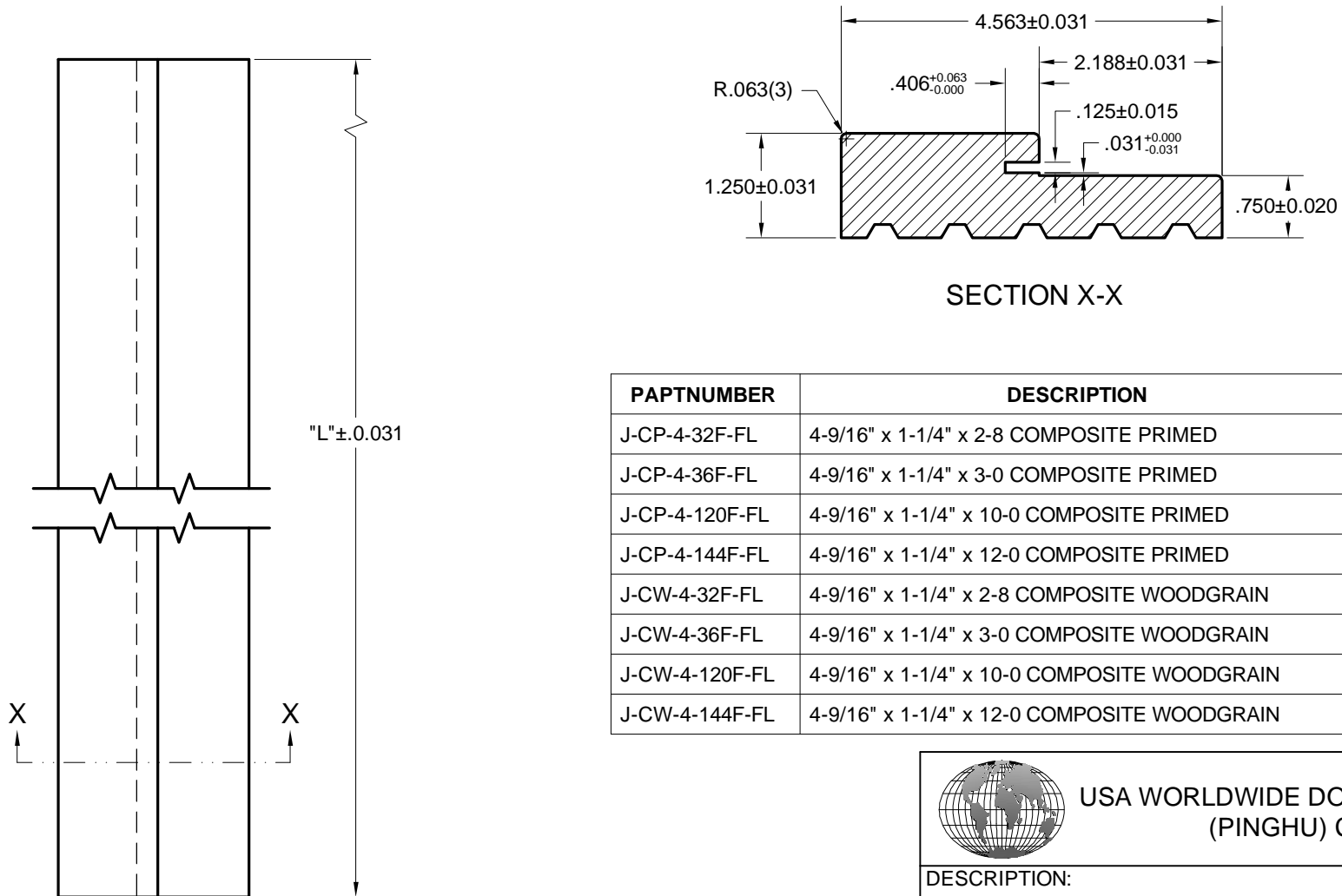
DESCRIPTION:		JAMB 6-9/16 X 1-1/4	
MATERIAL:		COMPOSITE	
DRAWN BY:		DATE:	
REVISION:		DRAWING NO.:	

Tom	7/31/15	FL-P696F-TD		
APPR BY:	DATE:	SCALE:	Unit:	SHEET:
		NTS	INCH	1 OF 1

UNSPECIFIED TOLERANCES:

FRACTION	± 1/64
.X	± .025
.XX	± .015
.XXX	± .005
ANGULAR	± 0.5°

REV	ECN	DESCRIPTION	BY	APP	DATE



PAPTNUMBER	DESCRIPTION	"L"
J-CP-4-32F-FL	4-9/16" x 1-1/4" x 2-8 COMPOSITE PRIMED	32.000
J-CP-4-36F-FL	4-9/16" x 1-1/4" x 3-0 COMPOSITE PRIMED	36.000
J-CP-4-120F-FL	4-9/16" x 1-1/4" x 10-0 COMPOSITE PRIMED	120.000
J-CP-4-144F-FL	4-9/16" x 1-1/4" x 12-0 COMPOSITE PRIMED	144.000
J-CW-4-32F-FL	4-9/16" x 1-1/4" x 2-8 COMPOSITE WOODGRAIN	32.000
J-CW-4-36F-FL	4-9/16" x 1-1/4" x 3-0 COMPOSITE WOODGRAIN	36.000
J-CW-4-120F-FL	4-9/16" x 1-1/4" x 10-0 COMPOSITE WOODGRAIN	120.000
J-CW-4-144F-FL	4-9/16" x 1-1/4" x 12-0 COMPOSITE WOODGRAIN	144.000

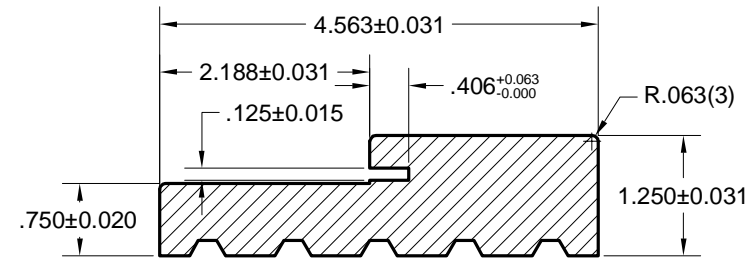
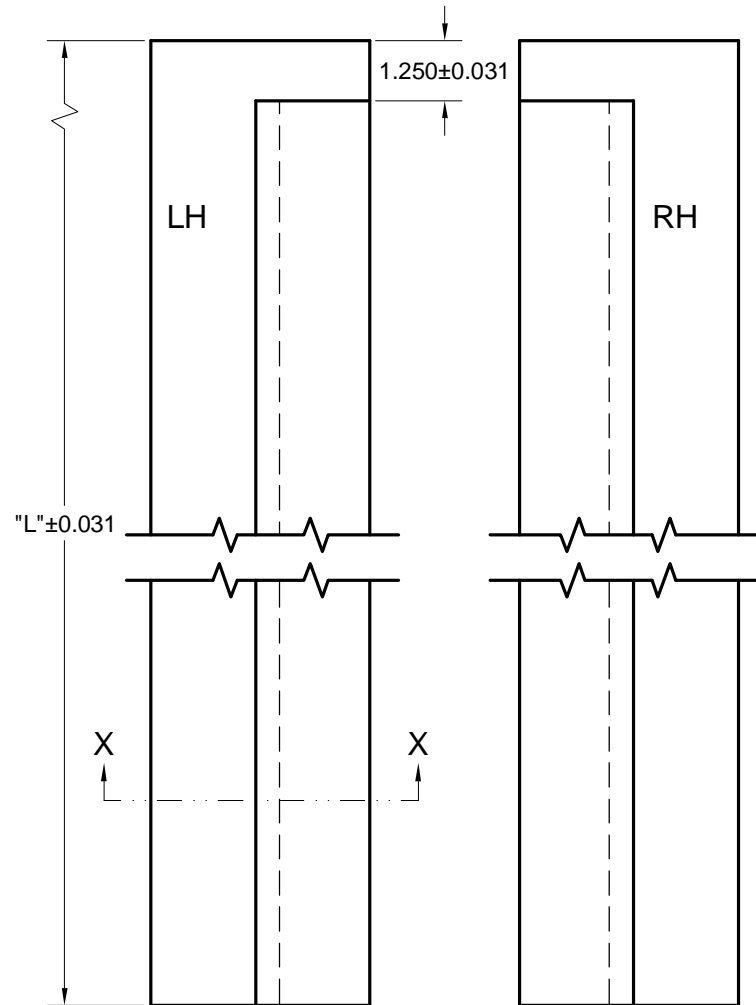


USA WORLDWIDE DOOR COMPONENTS
(PINGHU) CO., LTD.

DESCRIPTION: HEAD LINEAL 4-9/16	
MATERIAL: COMPOSITE	REVISION:

UNSPECIFIED TOLERANCES: FRACTION ± 1/64 .X ± .025 .XX ± .015 .XXX ± .005 ANGULAR ± 0.5°	DRAWN BY: Tom	DATE: 7/31/15	DRAWING NO.: FL-C496-OX		
	APPR BY:	DATE:	SCALE: NTS	Unit: INCH	SHEET: 1 OF 1

REV	ECN	DESCRIPTION	BY	APP	DATE



SECTION X-X

PAPTNUMBER	DESCRIPTION	"L"
J-CP-4-83F-FL	4-9/16" x 1-1/4" x 6-8' COMPOSITE PRIMED LH/RH	83.000
J-CP-4-99F-FL	4-9/16" x 1-1/4" x 8-0 COMPOSITE PRIMED LH/RH	99.000
J-CW-4-83F-FL	4-9/16" x 1-1/4" x 6-8 COMPOSITE WOODGRAIN LH/RH	83.000
J-CW-4-99F-FL	4-9/16" x 1-1/4" x 8-0 COMPOSITE WOODGRAIN LH/RH	99.000



USA WORLDWIDE DOOR COMPONENTS (PINGHU) CO., LTD.

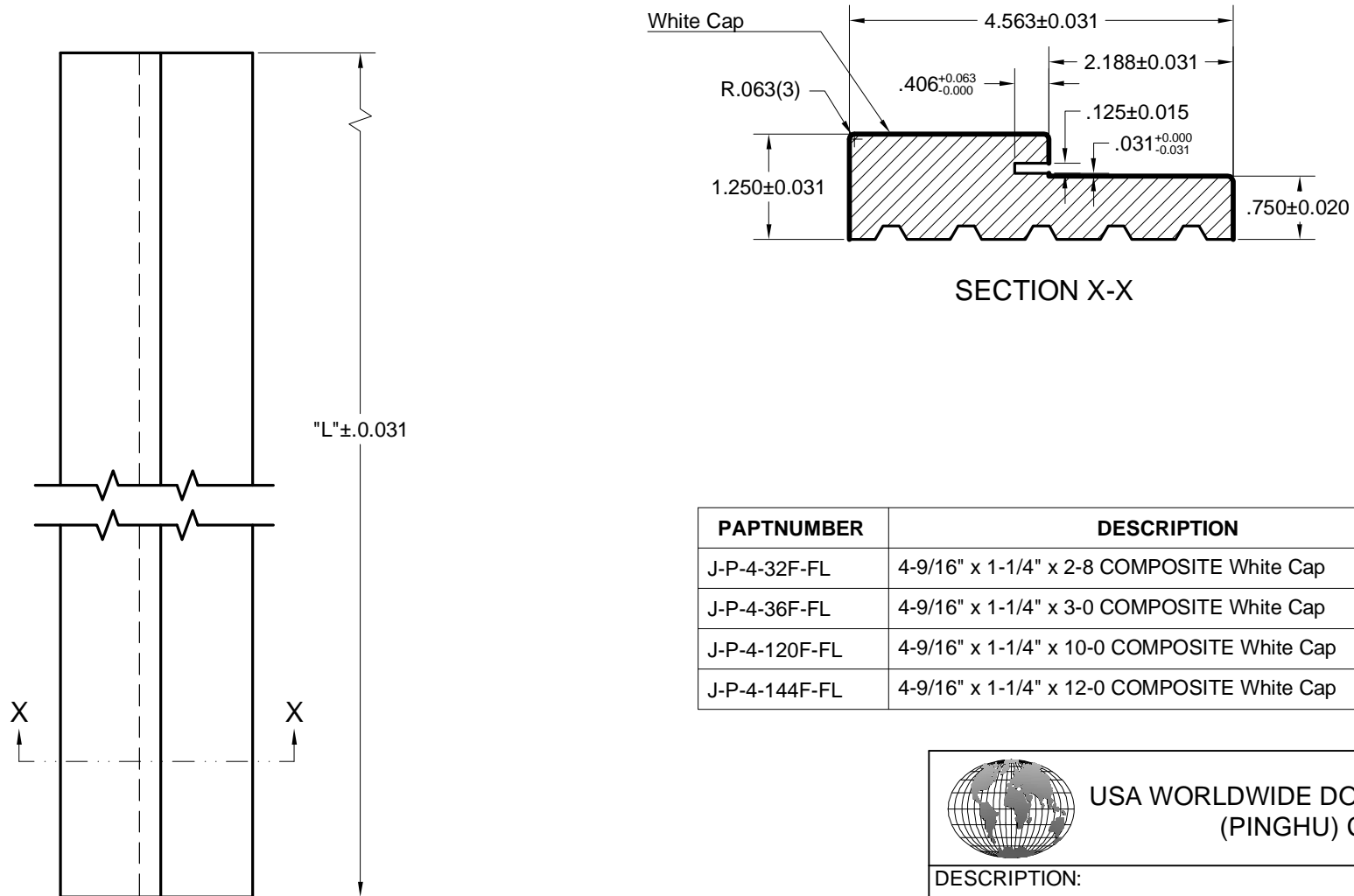
DESCRIPTION:		JAMB 4-9/16 X 1-1/4	
MATERIAL:		COMPOSITE	
REVISION:			

UNSPECIFIED TOLERANCES:

FRACTION	± 1/64
.X	± .025
.XX	± .015
.XXX	± .005
ANGULAR	± 0.5°

DRAWN BY:	DATE:	DRAWING NO.:		
Tom	7/31/15	FL-C496F-TD		
APPR BY:	DATE:	SCALE:	Unit:	SHEET:
		NTS	INCH	1 OF 1

REV	ECN	DESCRIPTION	BY	APP	DATE



PAPTNUMBER	DESCRIPTION	"L"
J-P-4-32F-FL	4-9/16" x 1-1/4" x 2-8 COMPOSITE White Cap	32.000
J-P-4-36F-FL	4-9/16" x 1-1/4" x 3-0 COMPOSITE White Cap	36.000
J-P-4-120F-FL	4-9/16" x 1-1/4" x 10-0 COMPOSITE White Cap	120.000
J-P-4-144F-FL	4-9/16" x 1-1/4" x 12-0 COMPOSITE White Cap	144.000

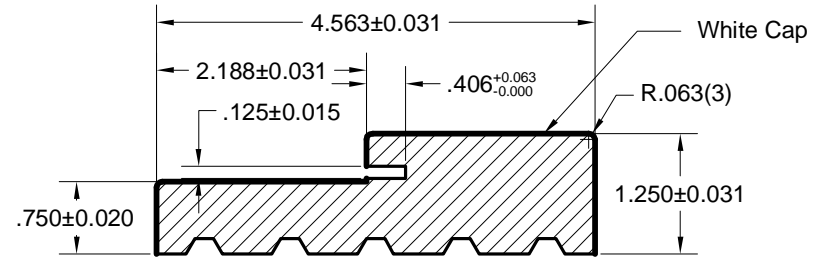
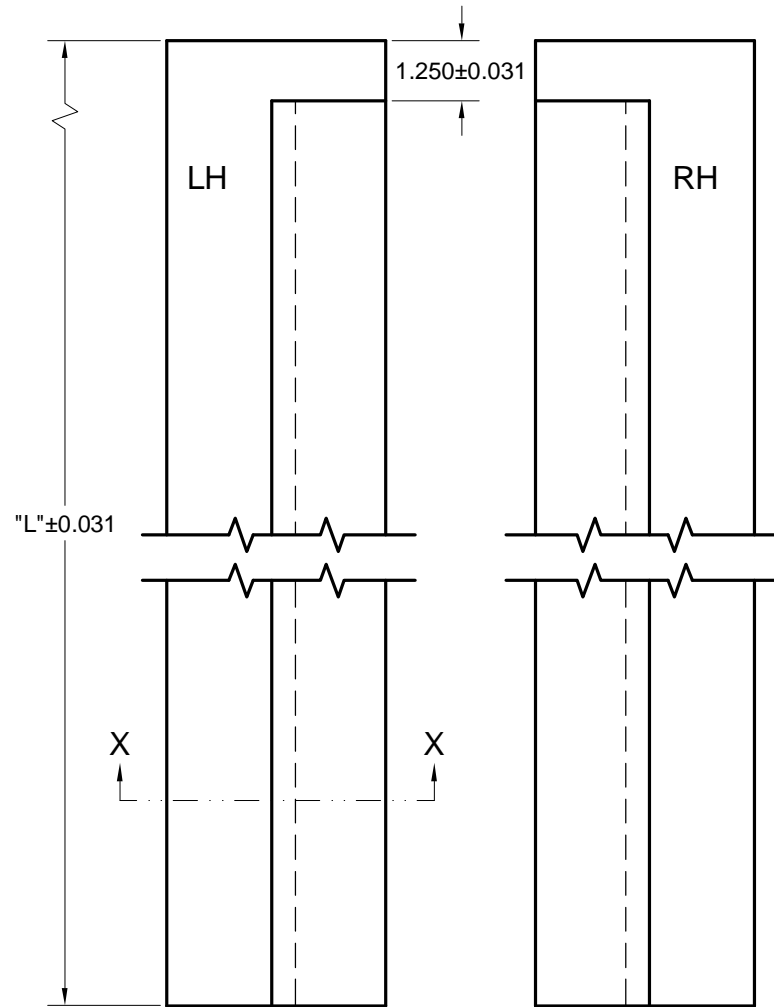


USA WORLDWIDE DOOR COMPONENTS
(PINGHU) CO., LTD.

DESCRIPTION:		HEAD LINEAL 4-9/16	
MATERIAL:	COMPOSITE	REVISION:	

UNSPECIFIED TOLERANCES: FRACTION ± 1/64 .X ± .025 .XX ± .015 .XXX ± .005 ANGULAR ± 0.5°	DRAWN BY:	DATE:	DRAWING NO.:	
	Tom	7/31/15	FL-P496-OX	
	APPR BY:	DATE:	SCALE:	Unit:
			NTS	INCH
				SHEET:
				1 OF 1

REV	ECN	DESCRIPTION	BY	APP	DATE



SECTION X-X

PAPTNUMBER	DESCRIPTION	"L"
J-P-4-83F-FL	4-9/16" x 1-1/4" x 6-8' COMPOSITE White Cap LH/RH	83.000
J-P-4-99F-FL	4-9/16" x 1-1/4" x 8-0 COMPOSITE White Cap LH/RH	99.000

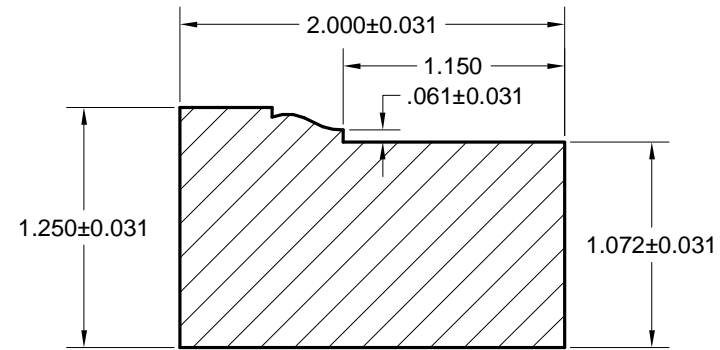
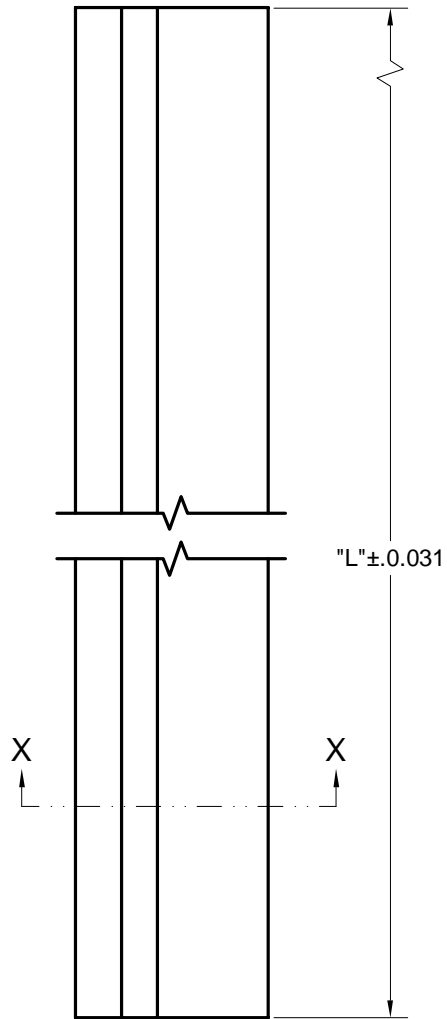


USA WORLDWIDE DOOR COMPONENTS (PINGHU) CO., LTD.

DESCRIPTION:		JAMB 4-9/16 X 1-1/4	
MATERIAL:	COMPOSITE	REVISION:	

UNSPECIFIED TOLERANCES: FRACTION ± 1/64 .X ± .025 .XX ± .015 .XXX ± .005 ANGULAR ± 0.5°	DRAWN BY:	DATE:	DRAWING NO.:	
	Tom	7/31/15	FL-P496F-TD	
	APPR BY:	DATE:	SCALE:	Unit:
			NTS	INCH
				SHEET:
				1 OF 1

REV	ECN	DESCRIPTION	BY	APP	DATE



SECTION X-X

PAPTNUMBER	DESCRIPTION	"L"
J-CP-180F-84-FL	2" x 1-1/4" x 6-8 COMPOSITE PRIMED	84.000
J-CP-180F-102-FL	2" x 1-1/4" x 8-0 COMPOSITE PRIMED	102.000
J-CW-180F-84-FL	2" x 1-1/4" x 6-8 COMPOSITE WOODGRAIN	84.000
J-CW-180F-102-FL	2" x 1-1/4" x 8-0 COMPOSITE WOODGRAIN	102.000



USA WORLDWIDE DOOR COMPONENTS
(PINGHU) CO., LTD.

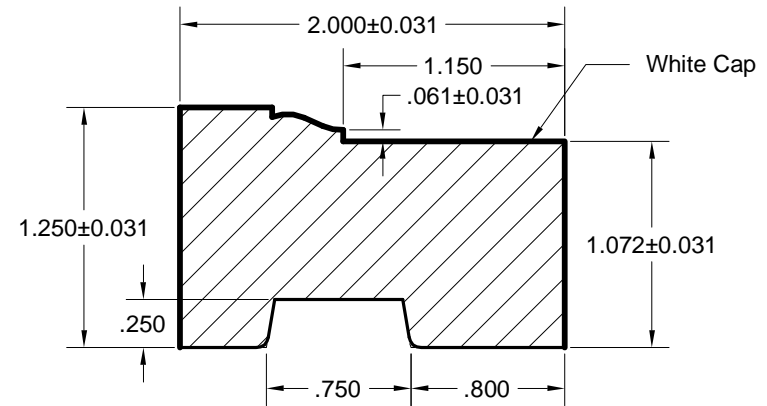
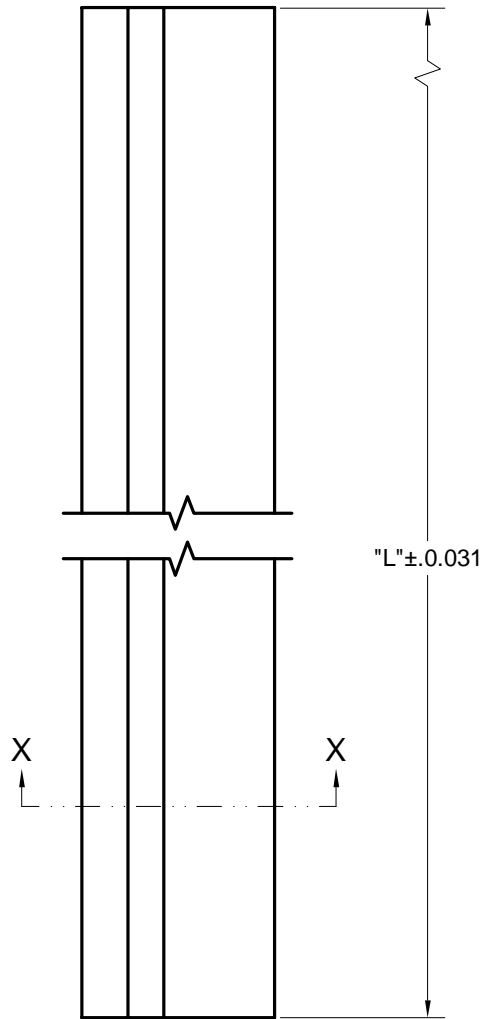
DESCRIPTION: 1-1/4" X 2" Brick Mould 180	
MATERIAL: COMPOSITE	REVISION:

UNSPECIFIED TOLERANCES:

FRACTION	± 1/64
.X	± .025
.XX	± .015
.XXX	± .005
ANGULAR	± 0.5°

DRAWN BY: Tom	DATE: 7/31/15	DRAWING NO.: FL-C180F-OX		
APPR BY:	DATE:	SCALE: NTS	Unit: INCH	SHEET: 1 OF 1

REV	ECN	DESCRIPTION	BY	APP	DATE



SECTION X-X

PAPNUMBER	DESCRIPTION	"L"
J-P-180C-84-FL	2" x 1-1/4" x 6-8 COMPOSITE White Cap	84.000
J-P-180C-102-FL	2" x 1-1/4" x 8-0 COMPOSITE White Cap	102.000



USA WORLDWIDE DOOR COMPONENTS (PINGHU) CO., LTD.

DESCRIPTION:

1-1/4" X 2" Brick Mould 180

MATERIAL:

COMPOSITE

REVISION:

UNSPECIFIED TOLERANCES:

FRACTION	± 1/64
.X	± .025
.XX	± .015
.XXX	± .005
ANGULAR	± 0.5°

DRAWN BY:

Tom

DATE:

7/31/15

DRAWING NO.:

FL-P180C-OX

APPR BY:

DATE:

SCALE:

NTS

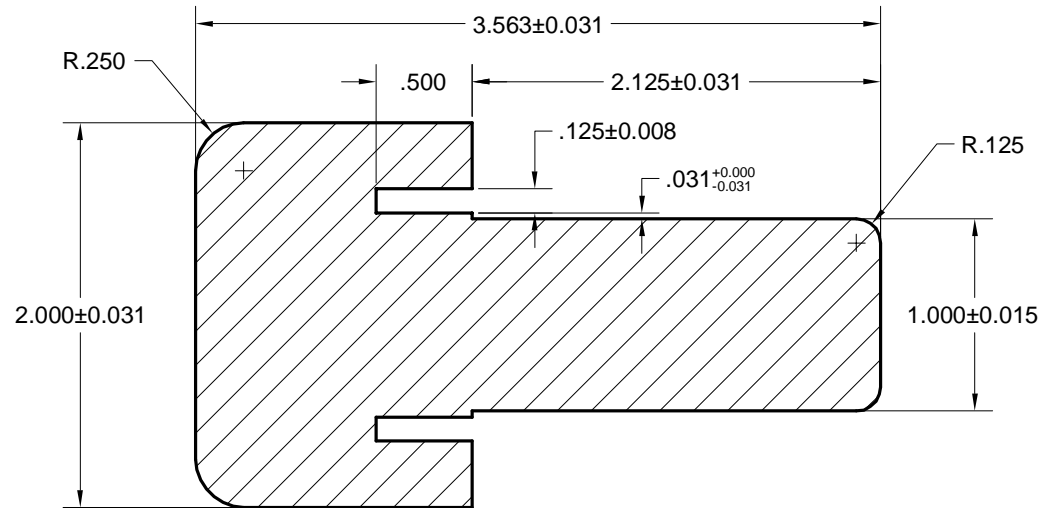
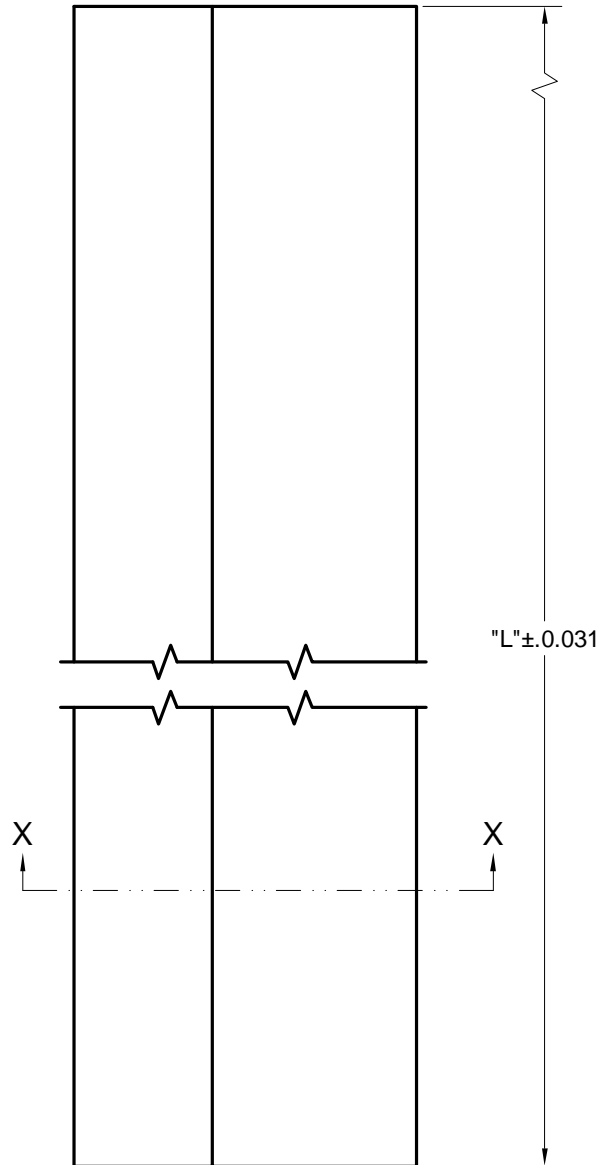
Unit:

INCH

SHEET:

1 OF 1

REV	ECN	DESCRIPTION	BY	APP	DATE



SECTION X-X

PAPTNUMBER	DESCRIPTION	"L"
J-CP-MP-396-2F-84-FL	2" x 3-9/16" x 6-8 COMPOSITE PRIMED	84.000
J-CW-MP-396-2F-84-FL	2" x 3-9/16" x 6-8 COMPOSITE WOODGRAIN	84.000

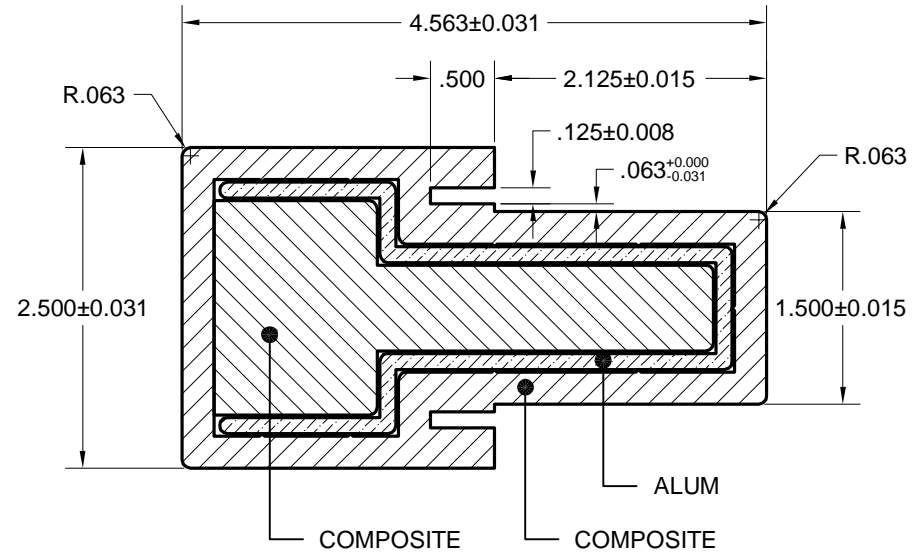
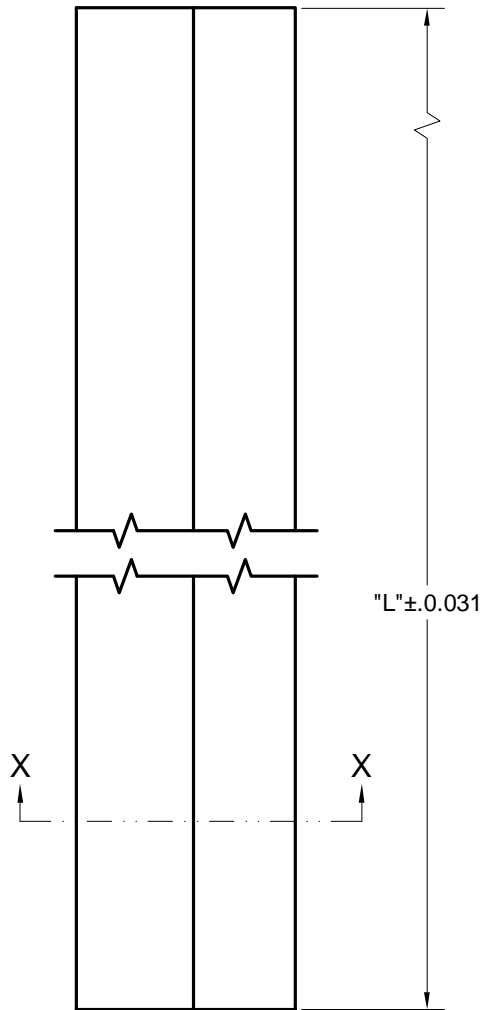


USA WORLDWIDE DOOR COMPONENTS
(PINGHU) CO., LTD.

DESCRIPTION: 2" x 3-9/16" MULL POST	
MATERIAL: COMPOSITE	REVISION:

UNSPECIFIED TOLERANCES: FRACTION ± 1/64 .X ± .025 .XX ± .015 .XXX ± .005 ANGULAR ± 0.5°	DRAWN BY: Tom	DATE: 7/31/15	DRAWING NO.: FL-CMP396-2F-OX		
	APPR BY:	DATE:	SCALE: NTS	Unit: INCH	SHEET: 1 OF 1

REV	ECN	DESCRIPTION	BY	APP	DATE



SECTION X-X

PAPNUMBER	DESCRIPTION	"L"
J-CP-MP-496-212A-84-FL	2-1/2" x 4-9/16" x 6-8 COMPOSITE PRIMED	84.000
J-CW-MP-496-212A-84-FL	2-1/2" x 4-9/16" x 6-8 COMPOSITE WOODGRAIN	84.000



USA WORLDWIDE DOOR COMPONENTS
(PINGHU) CO., LTD.

DESCRIPTION:

2-1/2" x 4-9/16" MULL POST

MATERIAL:

COMPOSITE/ALUM

REVISION:

UNSPECIFIED TOLERANCES:

FRACTION ± 1/64
 .X ± .025
 .XX ± .015
 .XXX ± .005
 ANGULAR ± 0.5°

DRAWN BY:

Tom

DATE:

7/31/15

DRAWING NO.:

FL-CMP496-212A-OX

APPR BY:

DATE:

SCALE:

NTS

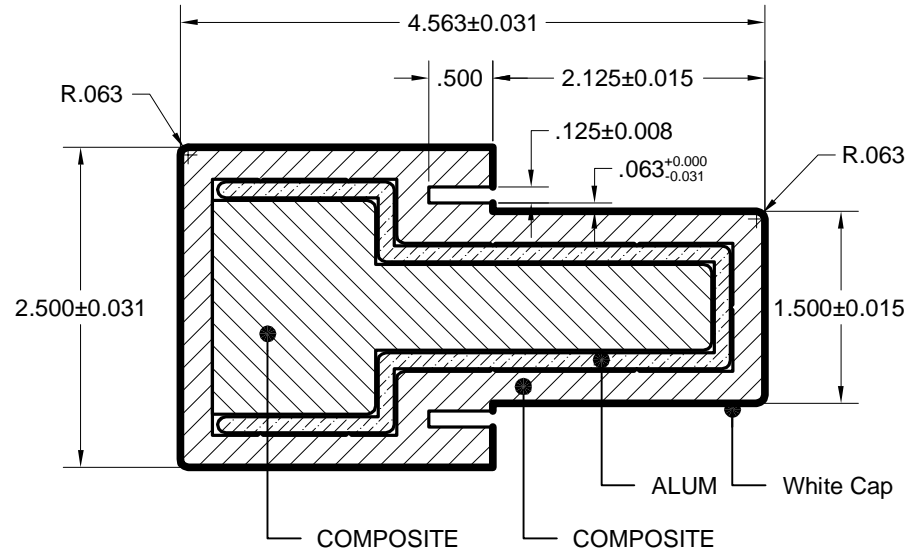
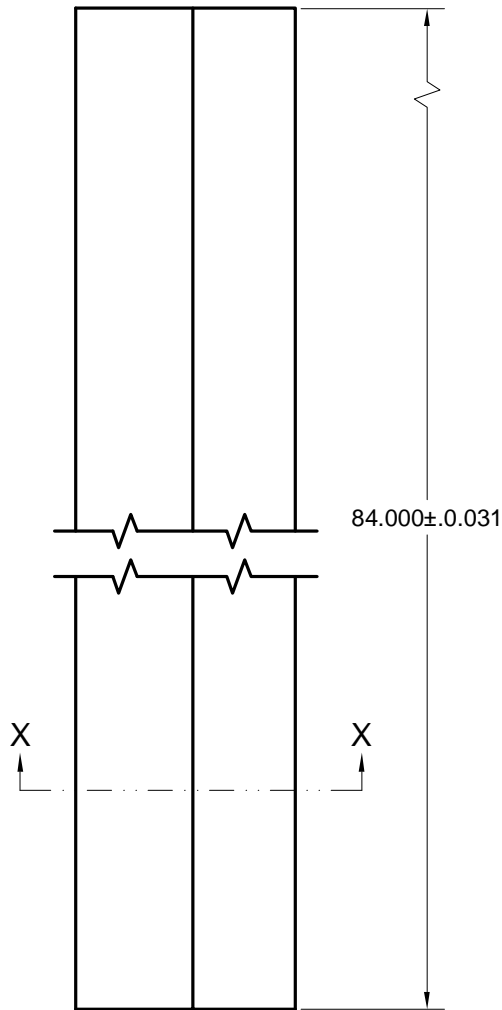
Unit:

INCH

SHEET:

1 OF 1

REV	ECN	DESCRIPTION	BY	APP	DATE



SECTION X-X



USA WORLDWIDE DOOR COMPONENTS
(PINGHU) CO., LTD.

DESCRIPTION:

2-1/2" x 4-9/16" MULL POST

MATERIAL:

COMPOSITE/ALUM

REVISION:

UNSPECIFIED TOLERANCES:

FRACTION ± 1/64
.X ± .025
.XX ± .015
.XXX ± .005
ANGULAR ± 0.5°

DRAWN BY:

Tom

DATE:

7/31/15

DRAWING NO.:

J-P-MP-496-212A-84-FL

APPR BY:

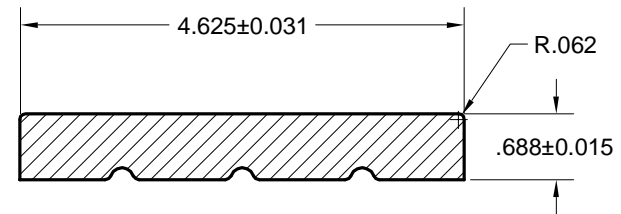
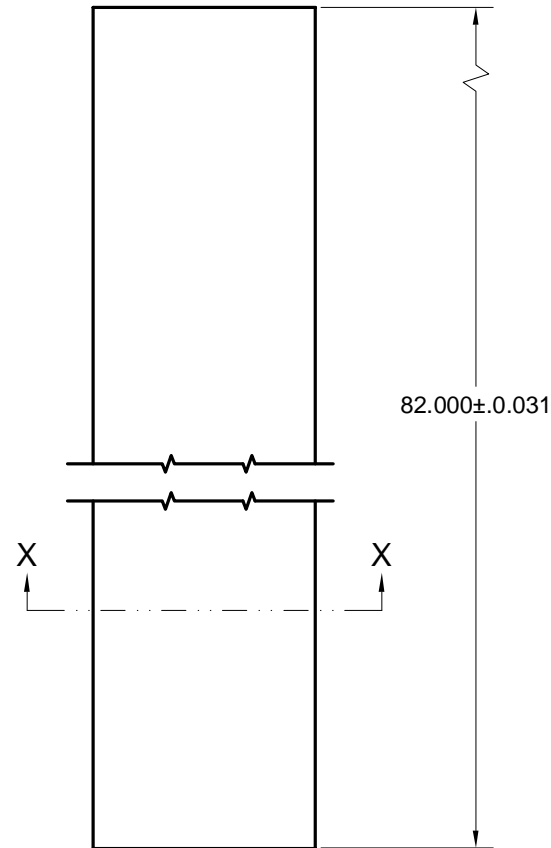
DATE:

SCALE:
NTS

Unit:
INCH

SHEET:
1 OF 1

REV	ECN	DESCRIPTION	BY	APP	DATE



SECTION X-X



USA WORLDWIDE DOOR COMPONENTS
(PINGHU) CO., LTD.

DESCRIPTION:

4-5/8" FLAT JAMB

MATERIAL:

COMPOSITE PRIMED

REVISION:

UNSPECIFIED TOLERANCES:

FRACTION	± 1/64
.X	± .025
.XX	± .015
.XXX	± .005
ANGULAR	± 0.5°

DRAWN BY:

Tom

DATE:

7/31/15

DRAWING NO.:

J-CP-FL-458-82-FL

APPR BY:

DATE:

SCALE:

NTS

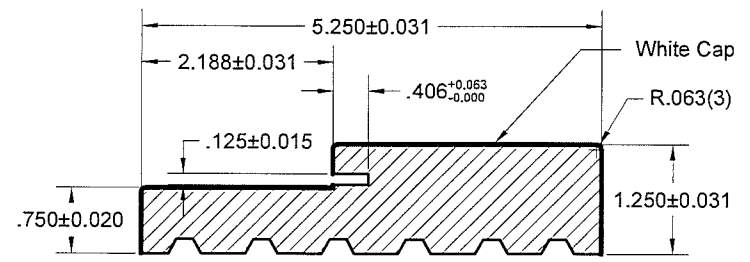
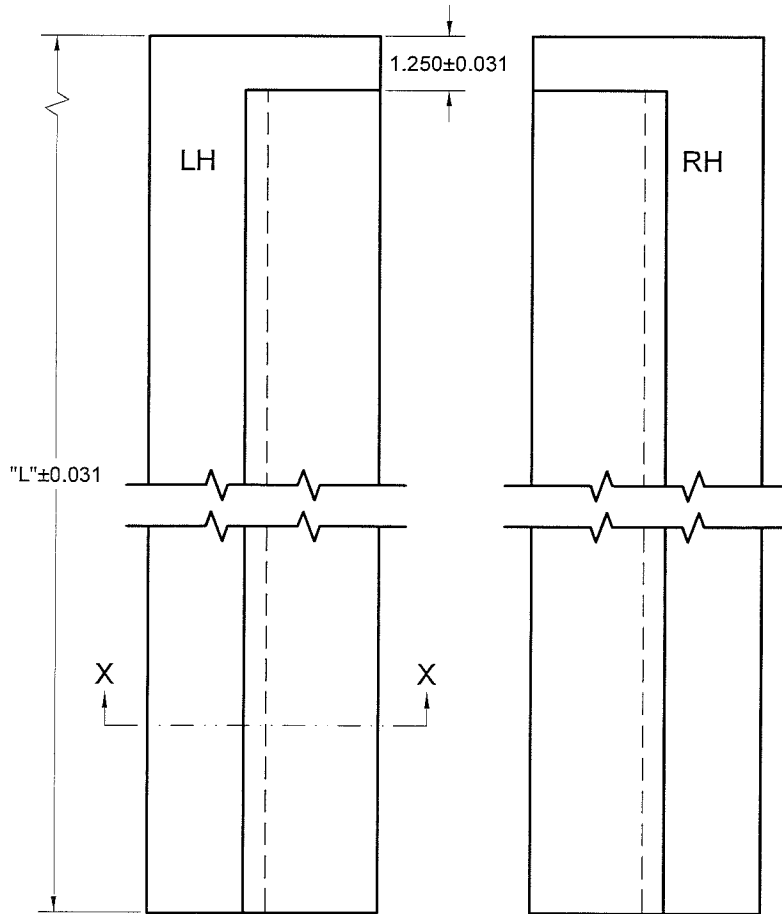
Unit:

INCH

SHEET:


1 OF 1

REV	ECN	DESCRIPTION	BY	APP	DATE



SECTION X-X

PAPTNUMBER	DESCRIPTION	"L"
J-P-5-83F-FL	5-1/4" x 1-1/4" x 6-8' COMPOSITE White Cap LH/RH	83.000
J-P-5-99F-FL	5-1/4" x 1-1/4" x 8-0 COMPOSITE White Cap LH/RH	99.000


USA WORLDWIDE DOOR COMPONENTS (PINGHU) CO., LTD.

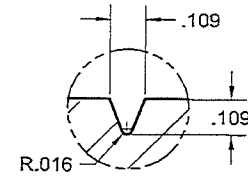
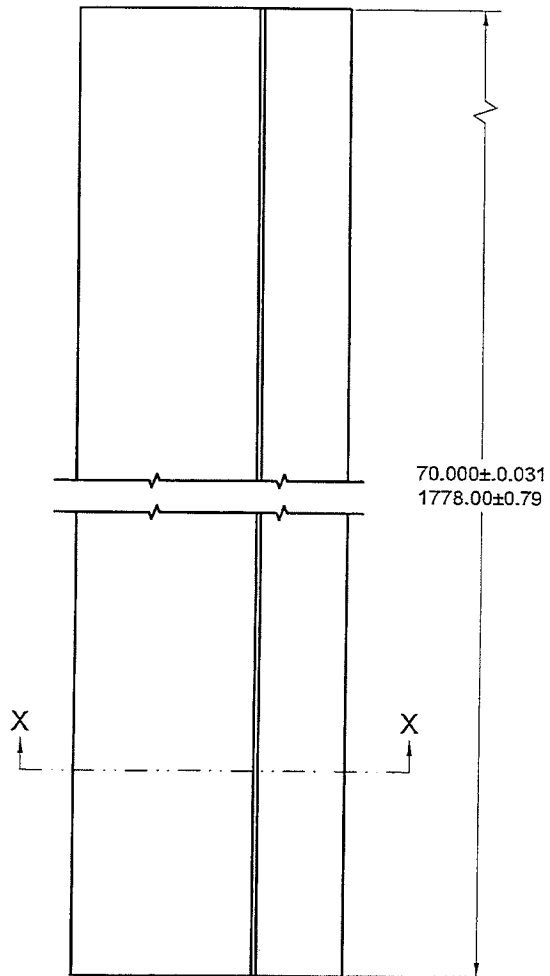
DESCRIPTION: JAMB 5-1/4 X 1-1/4

MATERIAL: COMPOSITE REVISION:

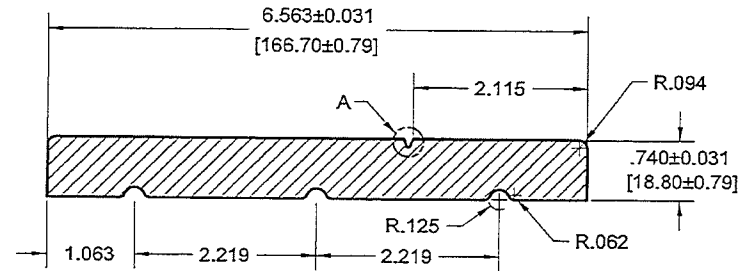
UNSPECIFIED TOLERANCES: FRACTION ± 1/64 .X ± .025 .XX ± .015 .XXX ± .005 ANGULAR ± 0.5°	DRAWN BY: Tom	DATE: 10/7/15	DRAWING NO.: FL-P514F-TD		
	APPR BY:	DATE:	SCALE: NTS	Unit: INCH	SHEET: 1 OF 1

REV	ECN	DESCRIPTION	BY	APP	DATE

FrontLine



A~A



SECTION X-X



USA WORLDWIDE DOOR COMPONENTS
(PINGHU) CO., LTD.

DESCRIPTION:

6-9/16" FLAT JAMB

MATERIAL:

COMPOSITE PRIMED

REVISION:

UNSPECIFIED TOLERANCES:	
FRACTION	± 1/64
X	± .025
.XX	± .015
.XXX	± .005
ANGULAR	± 0.5°

DRAWN BY:

Tom

DATE:

9/16/15

DRAWING NO.:

J-CP-FL-696-70-FL

APPR BY:

DATE:

SCALE:

NTS

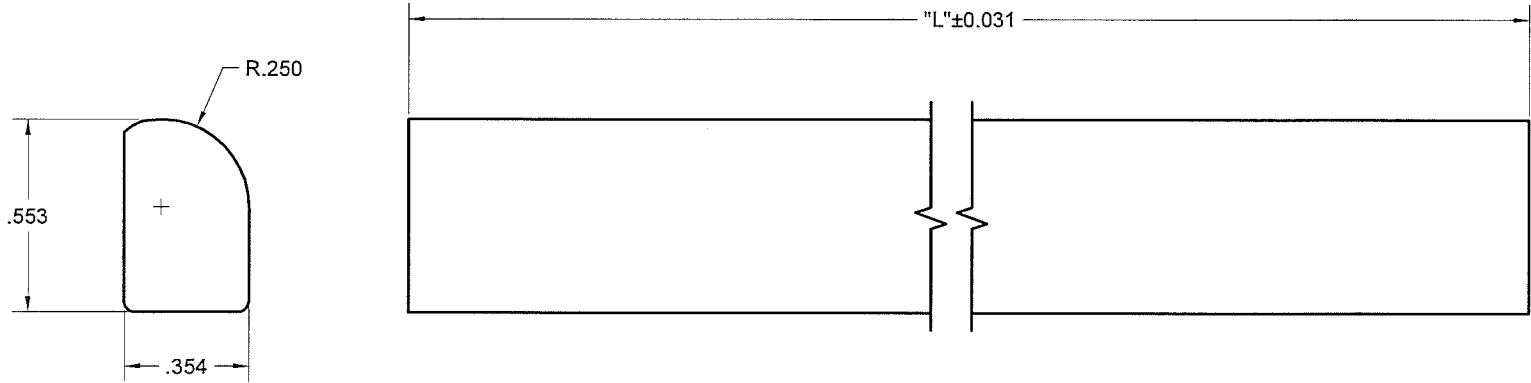
Unit

INCH

SHEET:

1 OF 1

REV	ECN	DESCRIPTION	BY	APP	DATE



J-CP-SL-83-FL	3/8" x 9/16" x 6-8 COMPOSITE PRIMED	83.000
J-CP-SL-99-FL	3/8" x 9/16" x 8-0 COMPOSITE PRIMED	99.000
J-CW-SL-83-FL	3/8" x 9/16" x 6-8 COMPOSITE WOODGRAIN	83.000
J-CW-SL-99-FL	3/8" x 9/16" x 8-0 COMPOSITE WOODGRAIN	99.000



USA WORLDWIDE DOOR COMPONENTS
(PINGHU) CO., LTD.

DESCRIPTION:
SIDELITE STOP

MATERIAL:
COMPOSITE

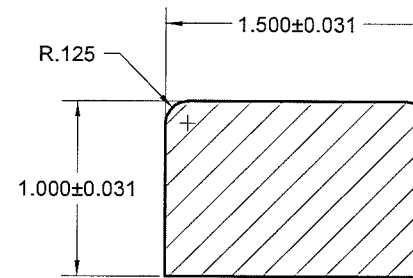
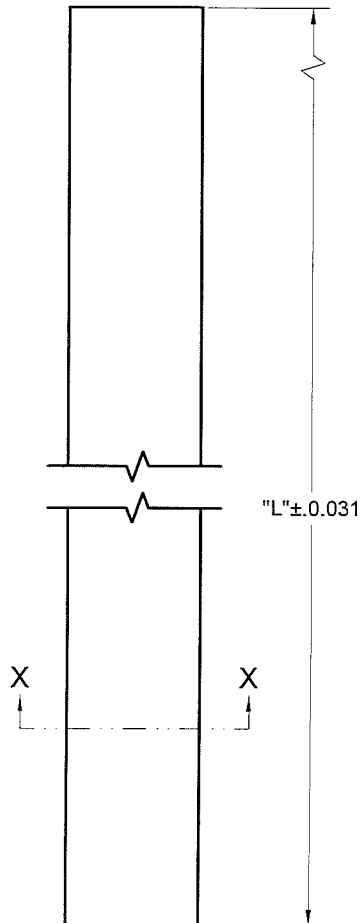
REVISION:

DRAWN BY: Tom
DATE: 10/07/15
DRAWING NO.: J-SL-FL

APPR BY: DATE: SCALE: NTS
Unit: INCH SHEET: 1 OF 1

UNSPECIFIED TOLERANCES:
FRACTION ± 1/64
X ± .025
.XX ± .015
.XXX ± .005
ANGULAR ± 0.5°

REV	ECN	DESCRIPTION	BY	APP	DATE



SECTION X-X

J-CP-MPC-83-FL	1" x 1-1/2" x 6-8 COMPOSITE PRIMED	83.000
J-CP-MPC-99-FL	1" x 1-1/2" x 8-0 COMPOSITE PRIMED	99.000
J-CW-MPC-83-FL	1" x 1-1/2" x 6-8 COMPOSITE WOODGRAIN	83.000
J-CW-MPC-99-FL	1" x 1-1/2" x 8-0 COMPOSITE WOODGRAIN	99.000



USA WORLDWIDE DOOR COMPONENTS
(PINGHU) CO., LTD.

DESCRIPTION:
1" x 1-1/2" MULL POST CAP

MATERIAL: COMPOSITE REVISION:

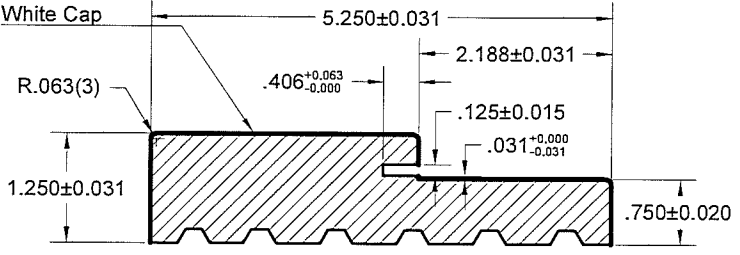
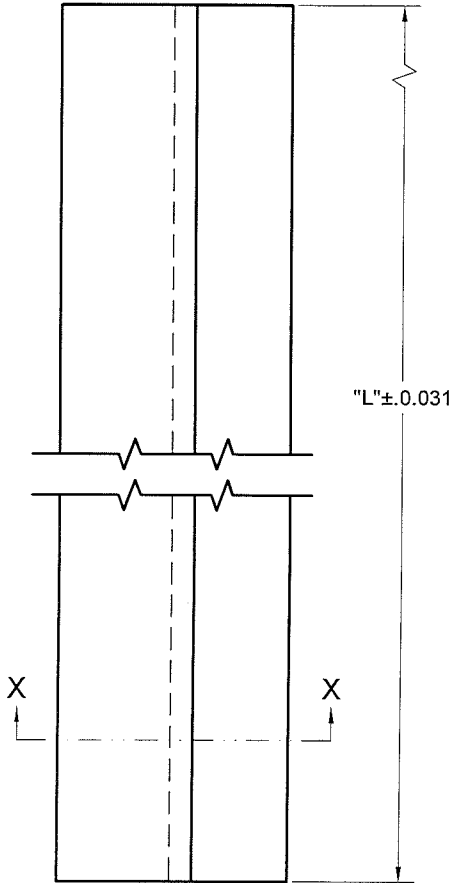
UNSPECIFIED TOLERANCES:

FRACTION	± 1/64
.X	± .025
.XX	± .015
.XXX	± .005
ANGULAR	± 0.5°

DRAWN BY: Tom DATE: 10/07/15 DRAWING NO.: FL-MPC-OX

APPR BY: DATE: SCALE: NTS Unit: INCH SHEET: 1 OF 1

REV	ECN	DESCRIPTION	BY	APP	DATE



SECTION X-X

PAPTNUMBER	DESCRIPTION	"L"
J-P-5-32F-FL	5-1/4" x 1-1/4" x 2-8 COMPOSITE White Cap	32.000
J-P-5-36F-FL	5-1/4" x 1-1/4" x 3-0 COMPOSITE White Cap	36.000
J-P-5-120F-FL	5-1/4" x 1-1/4" x 10-0 COMPOSITE White Cap	120.000
J-P-5-144F-FL	5-1/4" x 1-1/4" x 12-0 COMPOSITE White Cap	144.000



USA WORLDWIDE DOOR COMPONENTS
(PINGHU) CO., LTD.

DESCRIPTION:		HEAD LINEAL 5-1/4	
MATERIAL:	COMPOSITE	REVISION:	

UNSPECIFIED TOLERANCES:

FRACTION	± 1/64
.X	± .025
.XX	± .015
.XXX	± .005
ANGULAR	± 0.5°

DRAWN BY:	DATE:	DRAWING NO.:	
Tom	10/07/15	FL-P514-OX	
APPR BY:	DATE:	SCALE:	Unit:
		NTS	INCH
		SHEET:	1 OF 1

REV	ECN	DESCRIPTION	BY	APP	DATE